

STEAM-FLO® Series Steam Generators

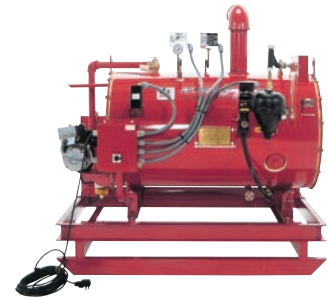
370 - 845 Lbs. per hour of saturated steam in minutes • Continuous, Unlimited Steam
Simple Operation • Easy Maintenance • Built To Last



Model SF-25
Oil-Fired, leg mount



Self-contained Model SF-11, Oil-Fired with water tank, generator and highway trailer



Skid Mounted SF-11, Oil-Fired

STEAM-FLO® STEAM GENERATORS

Sioux has built Steam-Flo® steam generators since 1939. Thousands are in operation worldwide. The Sioux Steam-Flo® line provides low pressure steam for a variety of applications. The Steam-Flo® vessel is constructed from 1/4" boiler plate steel, and will give years of service with minimal maintenance. Low water sensor switch and automatic water feeder maintain water level and provide low-water shutdown.

- ✓ Registered with National Board of Boiler and Pressure Vessel Inspectors.
- ✓ Meets Requirements of CSD-1 of the ASME Code.
- ✓ Built to Section IV of the ASME code.

FEATURES:	BENEFITS:
3-pass dry Scotch boiler	Smaller, lighter and much more efficient than single pass designs, saves space and reduces operating costs
Access ports	Easy inspection and maintenance
Low exhaust stack temperature	Safety and energy efficient design
Custom options available	You can obtain the best equipment for your specific application
Few moving parts	Low maintenance
Electrical Cord with GFCI and plug	GFCI protects operator and unit in case of electrical overload

**CUSTOM
UNITS
AVAILABLE!**



STEAM-FLO® Series Steam Generators

STEAM-FLO®

Specifications - Leg-mount model with Insulation Option

Model	SF-11	SF-20	SF-25
Fuel	Oil, LP, Natural Gas	Oil	LP or Natural Gas
Boiler Horsepower	10.7 BHP	19.7 BHP	24.5 BHP
Steam Output**	370 Lbs./Hr.	680 Lbs./Hr.	845 Lbs./Hr.
Firing Rate (#2 Fuel Oil)	3.05 GPH	5.65 GPH	N/A
Firing Rate (LP Gas, CFH)	171 CFH	N/A	1,010 CFH
Firing Rate (Natural Gas, CFH)	427 CFH	N/A	404 CFH
Input BTU/Hour	427,000	791,000	1,010,000
Max. Steam Working Pressure	15 PSI	15 PSI	15 PSI
Operating Steam Working Pressure	5-10 PSI	5-10 PSI	5-10 PSI
Max. Temperature	250°F	250°F	250°F
Heating Tube Surface Area	65 Ft ²	118 Ft ²	118 Ft ²
Boiler Volume (Approx.)	55 Gallons	135 Gallons	135 Gallons
Oil Fuel Tank Capacity (Optional)	36 Gallons	65 Gallons	N/A
Efficiency (Approx.)	84%	83%	81%
Operating Current (AMPS)	5 (Oil) 7 (Gas)	5	7
Machine Dimensions (Approx.)	60"L x 40"W x 51"H	70"L x 51"W x 61"H	85"L x 51"W x 61"H
Shipping Dimensions (Approx.)	85"L x 54"W x 60"W	76"L x 58"W x 72"H	94"L x 58"W x 72"H
Machine Weight, Dry (Approx.)	900 Lbs.	1,200 Lbs.	1,200 lbs.
Shipping Weight (Approx.)	1,220 lbs.	1,820 lbs.	1,910 Lbs.

Specifications - Leg-mount model without Insulation Option

Model	SF-11	SF-20	SF-25
Boiler Horsepower	10.3 BHP	19.2 BHP	24 BHP
Steam Output**	355 Lbs./Hr.	660 Lbs./Hr.	821 Lbs./Hr.
Efficiency (Approx.)	81%	80%	79%
Insulation Cost Payback Period (Approx.)*	2.2 Years	2.1 Years	1.9 Years

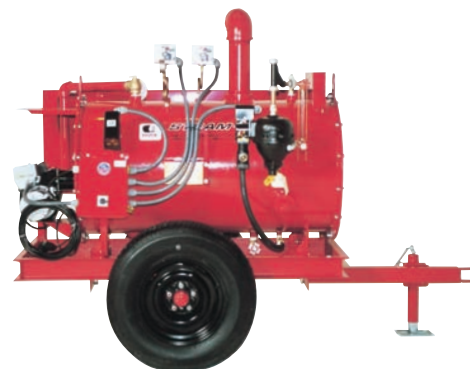
*Based on standard operating conditions (1,200 hour usage per year).

**212°F, which is the standard boiler industry performance rating temperature.

OPTIONS:

- Portable Non-Highway Trailer Option Includes: 15" Pneumatic Tires, 36-Gallon Fuel Tank, Trailer Hitch
- Over the Road Highway-Rated 2-Wheel Trailer
- Skid Mounted with 36-Gallon Fuel Tank
- Insulation Option Includes: Protective Stainless Steel Outer Wrap and 1" fiberglass insulation
- Available as a Hot Water Boiler

SF-11, Oil-Fired Non-Highway Trailer



Specifications may vary +/-10% depending on usage application, local conditions, inlet temperature, etc.

Steam-Flo® is a registered trademark of Sioux Corporation.

This product is covered by one or more U.S. patents and/or U.S. patents pending. Copyright 2008 Sioux Corporation.

No portion of this literature may be reproduced without express written permission of Sioux Corporation.



Reliability Since 1939

For more information, call us Toll-free at (888) 763-8833
or visit us at www.sioux.com

® **SIOUX CORPORATION**

One Sioux Plaza • Beresford, SD 57004-1500

Toll-free: (888) 763-8833 • Tel: (605) 763-3333 • Fax: (605) 763-3334

E-mail: email@sioux.com • <http://www.sioux.com>

